

1996 Parts Catalogue

Contents

*36" (91cm) Cutter Deck ..... page 3 – 4*

*42" (106cm) Cutter Deck ..... page 5 – 6*

*48" (122cm) Cutter Deck ..... page 7 – 8*

*Tractor Chassis and Upper Body Panels – T1400, T1400H, T1600, T1600H,  
T1800 and T1800H ..... page 9 – 10*

*Tractor Chassis and Upper Body Panels – 1012 and 1012H ..... page 11 – 12*

*Steering, Gear Change and Electrical Controls – T1400, T1400H, T1600, T1600H,  
T1800 and T1800H ..... page 13 – 14*

*Steering, Gear Change and Electrical Controls – 1012 and 1012H ..... page 15 – 16*

*Tractor Chassis, PTO, Brake and Cutter Controls – T1400H, T1800H and T1600H Early ..... page 17 – 19*

*Tractor Chassis, PTO, Brake and Cutter Controls – 1012H ..... page 20 – 21*

*Tractor Chassis, PTO, Brake and Cutter Controls – T1400, T1800 and T1600 Early ..... page 22 – 23*

*Tractor Chassis, PTO, Brake and Cutter Controls – 1012 ..... page 24 – 25*

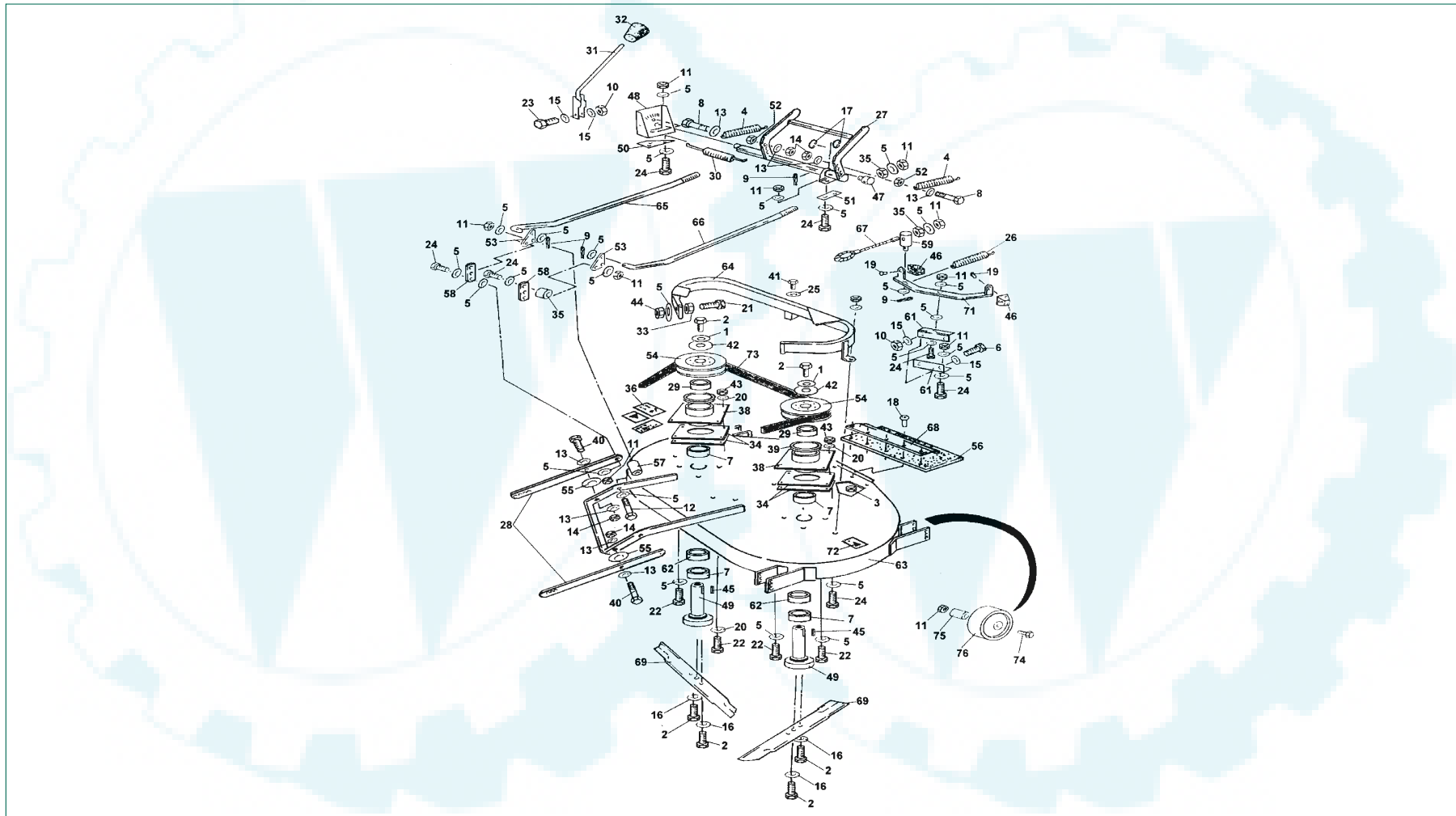
T H E B E S T O F B R I T I S H E N G I N E E R I N G



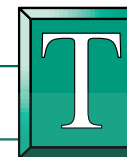
Westwood



36" (91cm) Cutter Deck – 9023 and 9024



T H E B E S T O F B R I T I S H E N G I N E E R I N G



### 36" (91cm) Cutter Deck – 9023 and 9024

ITEM	PART NO.	DESCRIPTION	QTY
1	1006	Washer, hardened domed	2
2	094-1025	Setscrew	8
3	1053	Nut, 2BA Nyloc	5
4	1076	Tension spring	2
5	011-0801	Washer, 5/16" dia.	45
6	1156	Setscrew, 1/4" UNF x 3/4"	2
7	1180	Bearing, NSK6205-RS	4
8	2025	Bolt, 3/8" UNF x 2 1/4"	2
9	1233	Split pin, 1/8" dia x 3/4"	5
10	1270	Nut, 1/4" UNF Nyloc	5
11	1273	Nut, 3/8" UNF Nyloc	21
12	1318	Bolt, 3/8" UNF x 2"	2
13	1323	Washer, 3/8" dia	10
14	1324	Nut, 3/8" UNF Nyloc	6
15	1331	Washer, 1/4" dia.	7
16	1633	Washer, 3/8" shakeproof	6
17	1663	"E" Clip, AM1500-75	2
18	1735	Screw, 2BA x 3/4" long	5
19	1956	Screw, No. 8 x 1" Self tap	4
20	6124	Washer, M10	8
21	7418	Bolt, M8 cup square head	1
22	5850	Setscrew, M10 x 25	8
23	2022	Bolt, 1/4" UNF x 1 1/4"	1
24	2031	Setscrew, 3/16" UNF x 1"	11
25	2048	Washer, 3/16" shakeproof	4
26	2103	Spring tension (9023 Only)	1
27	2395	Hanger bracket assembly	1
28	2410	Hitch bar	2
29	9070	Pulley spacer	2
30	2595	Tension spring	1
31	7646	Lever, height adjuster	1
32	2649	Knob	1
33	3654	Nut, M8	1
34	9076	Spacer plate	4
35	3397	Spacer, 1/4" long	4
	3329	Spacer, 3/16" long	3
36	3439	Label, height adjuster	1
37	1269	Label, height adjuster	1

ITEM	PART NO.	DESCRIPTION	QTY
38	8384	Bearing housing	2
39	8437	Pulley shroud	2
40	3610	Setscrew, 3/8" UNF x 1 1/2"	4
41	5849	Setscrew, M8 x 20 Patchlock	4
42	3618	Washer	2
43	2761	Nut, M10 Nyloc	8
44	2044	Nut, M8 Nyloc	1
45	3841	Key, 1/4" square x 3/4"	2
46	3730	Brake block (9023 only)	2
47	3740	Pivot, lift rod	2
48	3753	Quadrant, height adjuster	1
49	8844	Cutter shaft	2
50	9069	Spacer plate (Quadrant)	1
51	3781	Spacer plate (Hanger bkt)	1
52	3792	Locknut, 3/8" UNF	4
53	3907	Link plate	2
54	7386	Pulley	2
55	4124	Washer, 3/8" dia.	2
56	4220	Rubber flap	1
57	4221	Bush, link	2
58	3760	Link arm	2
59	4232	Pillar, brake arm (9023 only)	1
60		Not Allocated	
61	8145	Bridge, brake arm (9023 only)	2
62	8913	Spacer, bearing	2
63	8930	Deck shell	1
64	8144	Guard, pulley/belt	1
65	4939	Hitch rod, RH	1
66	4940	Hitch rod, LH	1
67	4941	Brake cable (9023 only)	1
68	4233	Retaining strip	2
69	9025	Cutter blade	2
70		Not Allocated	
71	4946	Brake arm (9023 only)	1
72	7515	Label, hazard warning	1
73	1721	Belt (9023 only)	1
	7604	Belt (9024 only)	1
74	1312	Bolt, 3/16" UNF x 3"	4

ITEM	PART NO.	DESCRIPTION	QTY
75	4774	Sleeve	4
76	7320	Wheel, anti scalp	4

**Note:**

If installing 9023 Manual Deck on pre 1991 tractors use 9293 belt.

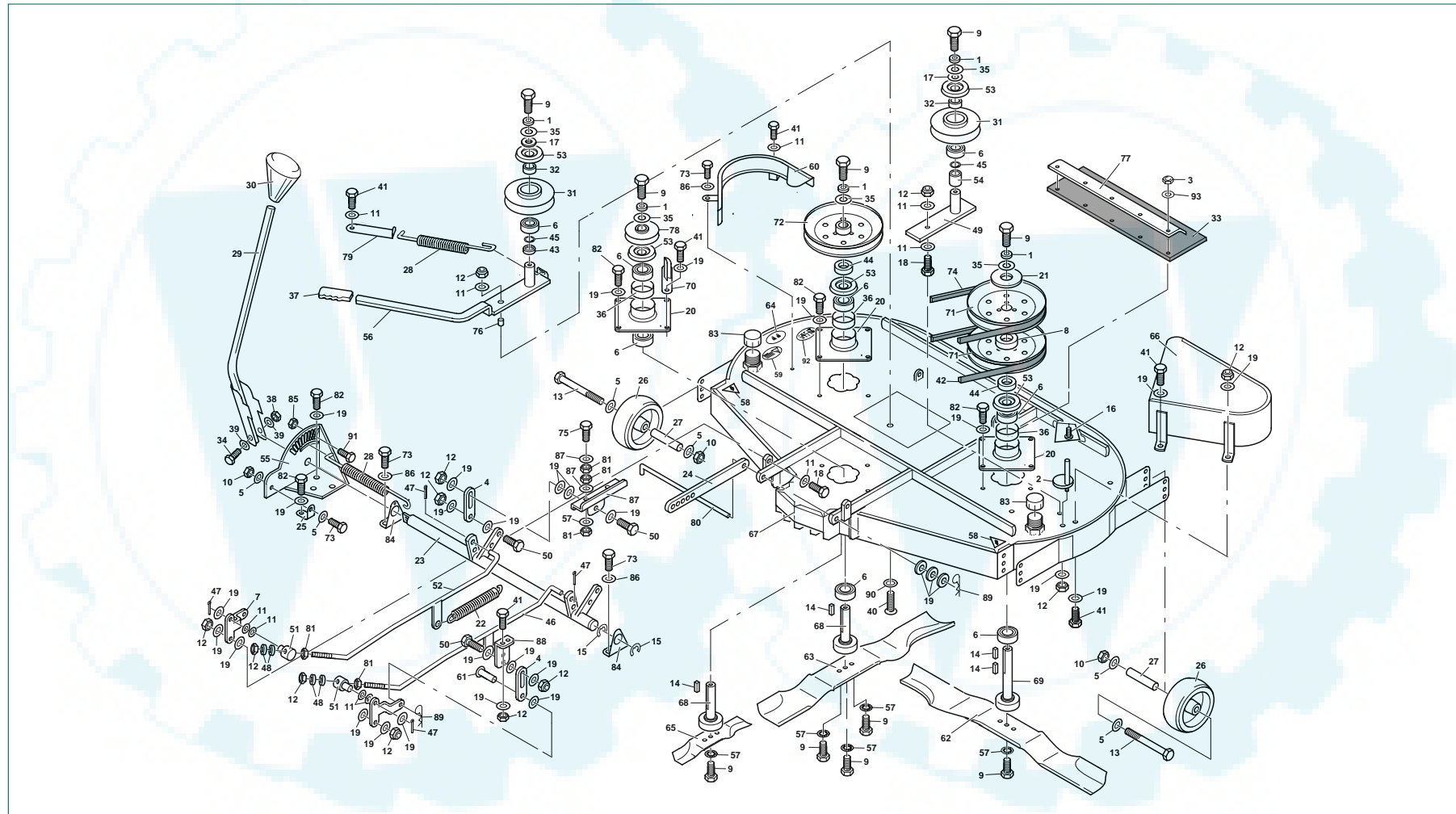
T H E B E S T O F B R I T I S H E N G I N E E R I N G



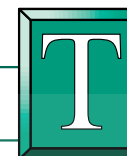
Westwood



### 42" (106cm) Contra-Rotating Cutter Deck – 9046



THE BEST OF BRITISH ENGINEERING



### 42" (106cm) Contra-Rotating Cutter Deck – 9046

ITEM	PART NO.	DESCRIPTION	QTY
1	M1922	Washer	5
2	6748	Shaft, Cam Adjuster	1
3	RCL084-05	Nut	5
4	8915	Lifting Link	4
5	6122	Washer	19
6	1180	Bearing, NSK. 6205-RS	8
7	8894	Plate, Front Link	2
8	8846	Spacer	1
9	RCL094-1025	Setscrew	14
10	RCL090-08	Nut	18
11	6125	Washer	32
12	2761	Nut	24
13	7046	Bolt	4
14	3841	Drive Key, 1/4" Square x 3/4"	4
15	1663	"E" Clip (A1500-75)	2
16	RCL081-0516	Screw	5
17	3618	Spacer	2
18	7340	Bolt	3
19	6124	Washer	12
20	8384	Bearing Housing	3
21	3635	Spacer, 2 3/8" OD x 1 1/2" ID x 10G	1
22	1076	Spring, Tension	2
23	9067	Hanger Bracket Assembly	1
24	8907	Hitch Bar	2
25	4876	Quadrant Bracket	1
26	7320	Wheel, Anti-Scalp	4
27	4774	Sleeve	4
28	2595	Spring	2
29	7646	Lever Height Adjuster	1
30	2649	Knob	1
31	9101	Idler Pulley	2
32	9103	Spacer	2
33	3286	Rubber Flap	1
34	RCL030-0635	Bolt	1
35	M1923	Washer, Disc Spring	5
36	8913	Spacer, Bearing	3
37	6083	Handgrip	1
38	RCL089-06	Nut	1

ITEM	PART NO.	DESCRIPTION	QTY
39	019-0601	Washer	2
40	RCL074-1035	Bolt	1
41	5850	Setscrew	12
42	MX1281	Belt	1
43	9102	Spacer	1
44	8572	Spacer	2
45	MX1320	Circlip	2
46	9061	Hitch Rod, Left Hand	1
47	1233	Split Pin Steel, 1/8" Dia. x 3/4"	4
48	3683	Spacer	3
49	8428	Idler Shaft Assembly	1
50	RCL048-1035	Bolt	8
51	8639	Pivot, Lift Rod	2
52	9062	Hitch Rod, Right Hand	1
53	8437	Pulley Shroud	5
54	9105	Idler Spacer	2
55	8889	Quadrant	1
56	8848	Engine Idler Assembly	1
57	RCL013-1001	Washer	9
58	RCL766178-00	Warning Label	2
59	RCL766194-00	Label, Hazard Warning	1
60	8425	Guard, Right Hand	1
61	3349	Rivet (Clevis Pin)	2
62	8768	Blade, Left Hand	1
63	8769	Blade, Right Hand	1
64	RCL766135-00	Label, Height Adjuster	1
65	8770	Blade, Centre	1
66	8926	Guard, Left Hand	1
67	8928	Cutter Deck	1
68	8774	Cutter Shaft (Short)	2
69	8844	Cutter Shaft (Long)	1
70	8426	Guard Central	1
71	8499	Pulley Assembly	2
72	8500	Pulley Assembly	1
73	2764	Setscrew	8
74	5672	Drive Belt	1
75	6213	Setscrew	4
76	8576	Spacer Tube	1

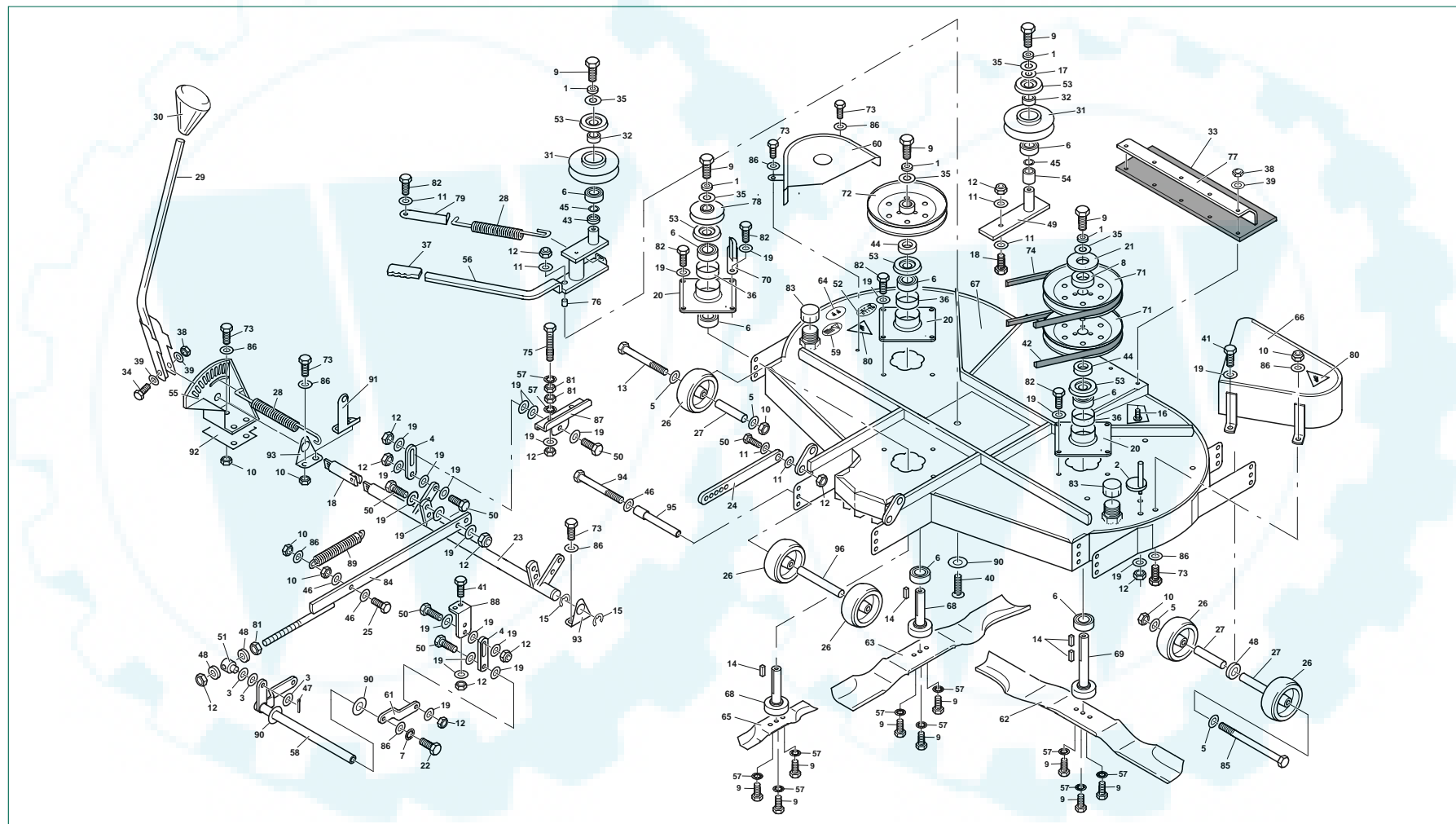
ITEM	PART NO.	DESCRIPTION	QTY
77	3287	Retaining Strip	1
78	8385	Pulley	1
79	8571	Bracket, Spring Retaining	1
80	9065	Bar, Hitch Pivot	1
81	6116	Nut	4
82	6117	Setscrew	9
83	MX1319	Cap	2
84	8922	Hanger Bkts	2
85	1270	Nut	1
86	2048	Washer	6
87	9303	Hanger Bracket, Right Hand Rear	1
*	9302	Hanger Bracket, Left Hand Rear	1
88	9304	Hanger Bracket, Front	2
89	1225	"R" Clip	4
90	1956	Washer	1
91	2022	Bolt	1
92	RCL766177-00	Label, Warning (Graphical)	1
93	RCL009-0501	Washer	10

\* Not Shown

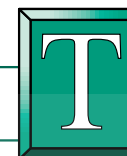
THE BEST OF BRITISH ENGINEERING



### 48" (122cm) Contra-Rotating Cutter Deck - ACC100006-00



THE BEST OF BRITISH ENGINEERING



**48" (122cm) Contra-Rotating Cutter Deck – ACC100006-00**

ITEM	PART NO.	DESCRIPTION	QTY
1	M1922	Washer	5
2	6748	Shaft, Cam Adjuster	1
3	RCL011-1001	Washer	3
4	8915	Lifting Link	4
5	6122	Washer	17
6	1180	Bearing, NSK. 6205-RS	8
7	RCL013-08	Washer	1
8	8846	Spacer	1
9	RCL094-1025	Setscrew	14
10	RCL090-08	Nut	18
11	6125	Washer	32
12	RCL090-10	Nut	24
13	7046	Bolt	2
14	3841	Drive Key, 1/8" Square x 3/8"	4
15	1663	"E" Clip (A1500-75)	2
16	RCL050-0616	Setscrew	5
17	3618	Spacer	1
18	RCL584199-00	Hanger Bkt. Shaft Extension	1
19	RCL017-1003	Washer	16
20	8384	Bearing Housing	3
21	3635	Spacer, 2 3/8" OD x 1 1/2" ID x 10G	1
22	RCL048-0820	Setscrew	1
23	9067	Hanger Bracket Assembly	1
24	8907	Hitch Bar	2
25	RCL030-0835	Bolt	1
26	7320	Wheel, Anti-Scalp	8
27	4774	Sleeve	6
28	2595	Spring	2
29	7646	Lever Height Adjuster	1
30	2649	Knob	1
31	9101	Idler Pulley	2
32	9103	Spacer	2
33	3286	Rubber Flap	1
34	RCL030-0635	Bolt,	1
35	M1923	Washer	5

ITEM	PART NO.	DESCRIPTION	QTY
36	8913	Spacer, Bearing	3
37	6083	Handgrip	1
38	RCL089-06	Nut	6
39	RCL009-0611	Washer	12
40	RCL074-1035	Bolt	1
41	5850	Setscrew	5
42	MX1304	Belt	1
43	9102	Spacer	1
44	8572	Spacer	2
45	MX1320	Circlip	2
46	009-0817	Washer	2
47	1223	Split Pin Steel, 1/8" Dia. x 3/4"	1
48	3683	Spacer	3
49	8428	Idler Shaft Assembly	1
50	RCL048-1035	Setscrew	10
51	8639	Pivot, Lift Rod	1
52	RCL766177-00	Decal, Warning Label (Graphical)	1
53	8437	Pulley Shroud	5
54	9105	Idler Spacer	1
55	RCL564040-00	Height Adjuster Quadrant	1
56	9002	Engine Idler Assembly	1
57	RCL013-1001	Washer	17
58	9067	Hanger Bracket Assembly	1
59	RCL766178-00	Label, Hazard Warning	1
60	RCL564093-00	Guard, Right Hand	1
61	RCL584056-00	Lifting Spindle Link, Left Hand	1
62	8886	Blade, Left Hand	1
63	8887	Blade, Right Hand	1
64	RCL766135-00	Label, Height Adjuster	1
65	8770	Blade, Centre	1
66	8926	Guard, Left Hand	1
67	RCL564095-00	Cutter Deck	1
68	8774	Cutter Shaft (Short)	2
69	8844	Cutter Shaft (Long)	1
70	8426	Guard Central	1

ITEM	PART NO.	DESCRIPTION	QTY
71	5435	Pulley Assembly	2
72	8890	Pulley Assembly	1
73	2764	Setscrew	10
74	5672	Drive Belt	1
75	6213	Setscrew	4
76	8576	Spacer Tube	1
77	3287	Retaining Strip	1
78	8385	Pulley	1
79	8571	Bracket, Spring Retaining	1
80	RCL766194-00	Warning Label	2
81	RCL061-10	Nut	9
82	6117	Setscrew	12
83	MX1319	Cap	2
84	RCL564041-00	Hitch Rod	1
85	RCL030-8140	Bolt	2
86	011-0801	Washer	16
87	9303	Hanger Bkt., Right Hand, Rear	1
*	9302	Hanger Bkt., Left Hand Rear	1
88	9304	Hanger Bkt., Front	2
89	RCL900010-00	Spring	1
90	1976	Washer	3
91	RCL584043-00	Spring Post	1
92	RCL584046-00	Spacer Plate	1
93	8922	Hanger Bkts.	2
94	RCL029-0890	Bolt	2
95	4774	Tube	2
*	3329	Spacer	2
96	RCL584203-00	Axle, Anti Scalp Wheel	1

\* Not Shown

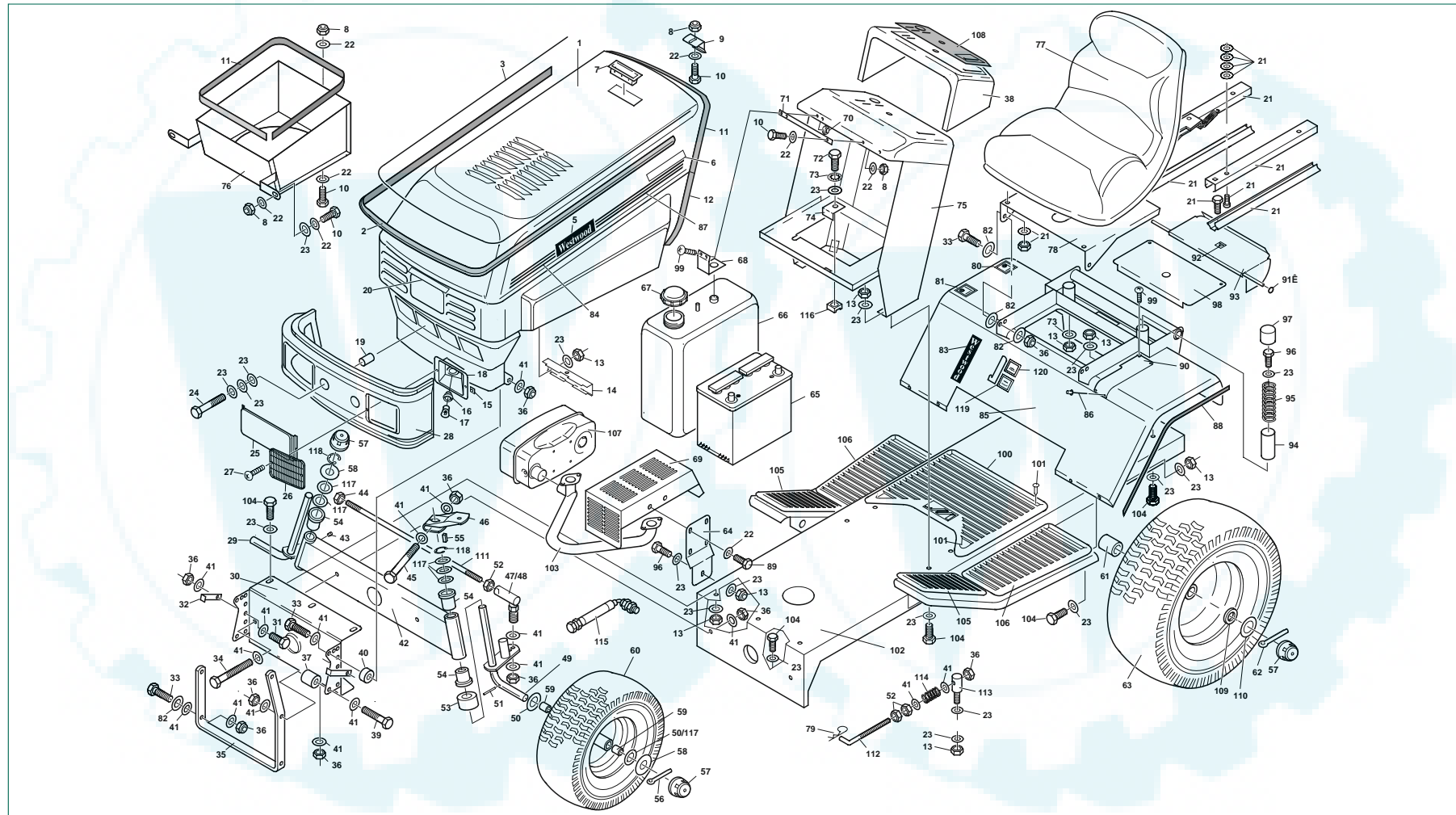
T H E B E S T O F B R I T I S H E N G I N E E R I N G



Westwood



Tractor Chassis and Upper Body Panels – T1400, T1800 and T1600 Early

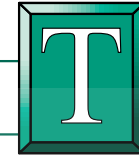


THE BEST OF BRITISH ENGINEERING





**Westwood**



**Tractor Chassis and Upper Body Panels – T1400, T1800 and T1600 Early**

ITEM	PART NO.	DESCRIPTION	QTY
1	8740	Bonnet	1
2	8853	Bonnet Trim Black	1
3	8996	Red Insert Bonnet Trim	1
5	9370	Westwood Decal	2
7	8896	Bonnet Hand Grip	1
8	1270	Nut 1/2" UNF Nyloc	5
9	8551	Bonnet Catch	1
10	1156	Setscrew 1/2" UNF x 3/4"	5
11	4832	Bonnet Trim (Length as required)	3
12	3583	Bonnet Trim (Length as required)	2
13	1273	3/8" UNF Nyloc Nut	19
14	9021	Grille Clamp Plate	1
15	3038	Nut "J" Type No 8	4
16	8273	Lampholder	2
17	8274	Lamp	2
18	8905	Headlight Reflector	2
19	M4389	Spacer Plastic	2
20	RCL766162-00	Manual Label	1
21	9385	Seat Runner Kit	1
22	1331	Washer 1/2" Dia. (T3L)	14
23	3613	Washer 3/8" Dia. (T32)	39
24	1266	3/8" UNF x 1 1/2" Bolt	2
25	9453	Cover Plate	1
26	8256	Headlamp Lens	2
27	1956	Screw No 8 x 1"	4
28	8842	Grille	1
29	9000	Stub Axle RH	1
30	8252	Chassis Bkt. Front	1
31	2015	3/8" x 1" Setscrew	2
32	9029	Bonnet Stop Bkt.	2
33	1948	Setscrew 3/8" UNF x 1 1/2"	4
34	1267	Bolt 3/8" UNF x 2 1/2"	3
35	9094	Hitch Bkt.	1
36	1324	Nut 3/8" UNF Nyloc	26
37	6636	Spacer	2
38	8849	Console Cover Assembly	1
39	1319	Bolt 3/8" UNF x 2"	2
40	3683	Spacer	3
41	1323	Washer 3/8" Dia. (T3L)	53
42	2296	Axle Beam	1
43	1423	Grease Nipple	2
44	6776	Locknut 3/8" UNF LH	1
45	1267	Bolt 3/8" UNF x 2 1/2"	1

ITEM	PART NO.	DESCRIPTION	QTY
46	4930	Steering Arm	1
47	6487	Ball Joint RH	1
48	6515	Ball Joint LH	1
49	8998	Stub Axle LH	1
50	3713	Wheel Washer Thick	4
51	1553	Roll Pin 1/8" Dia. x 1 1/2"	2
52	3792	Locknut 3/8" UNF	4
53	5479	Spacer Stub Axle	2
54	3355	Flanged Bush Delryn 500 Axle BM	4
55	1098	Woodruff Key 3/8" x 1"	1
56	1227	Split Pin 1/2" Dia. x 1 1/4"	2
57	4230	Hub Cap	5
58	3908	Hub Cap Washer 3/4" I.D. x 1 1/8" O.D.	3
59	3354	Bush Oilite	4
60	7520	Front Wheel Assembly 15"	2
*	7528	Wheel Rim	2
*	7518	Tyre	2
*	1540	Inner tube	2
61	7813	Wheel Spacer (Rear) 1" Bore	2
62	7882	Split Pin 3/8" x 1 1/4" LG.	2
63	8949	3/8" Bore Rear Wheel Ass - 20"	2
*	9039	Wheel Rim 1" Axle Bore	2
*	9040	Tyre	2
*	9041	Inner tube	2
64	7592	Support Bracket Exh.	1
65	1209	Battery 12V Type 138	1
66	3960	Fuel Tank	1
67	3963	Cap Fuel Tank	1
68	8202	Bkt. Fuel Tank	1
69	7751	Shield Muffler	1
70	1053	2 BA Nyloc Nut	3
71	8553	Plate Bonnet Catch	1
72	5480	Setscrew 8 x 30	3
73	2048	Washer 3/8" Shakeproof	3
74	7776	Bkt. Battery Clamp	1
75	8919	Console Assembly	1
76	9051	Air Intake Box	1
77	9416	Seat High Back (with rem. Seat Switch) (9489)	1
78	9387	Plate Seat	1
79	4086	"R" Clip Small	1
80	7361	Label P.G.C. Lower	1
81	7369	Label P.G.C. Raise	1
82	4124	3/8" x 1" Washer	8

ITEM	PART NO.	DESCRIPTION	QTY
83	9143	Centre Body Plaque	1
84	9367	Bonnet Stripe L.H.	1
85	9363	Ctr. Body Assembly	1
86	7595	Rivets (Black)	3
87	9368	Bonnet Stripe R.H.	1
88	6305	Trim	2
89	2030	Setscrew 1/2" UNC. x 3/4"	4
90	9366	Gear Plate, Manual (9391 Hydro)	1
91	4831	Star Lock	2
92	4967	Label Small Warning	1
93	8329	PTO Flap	1
94	9422	Spring Sleeve Plastic	2
95	2898	Seat Spring	2
96	2031	Setscrew 3/8" UNF x 1"	3
97	8501	Cap Seat Spring	2
98	9362	Plate PTO Cover	1
99	1735	Screw 2 BA x 3/4"	3
100	8850	CTR - Foot Mat	1
101	4958	Fir Tree Fastener	6
102	9140	Chassis	1
103	7548	Pipe Exhaust T1400, T1600, T1800	1
104	1982	Setscrew 3/8" UNF x 3/4"	18
105	5644	Foot Mats RH and LH Front	1 pair
106	5645	Foot Mats RH and LH Rear	1 pair
107	7351	Exhaust Muffler 493963	1
108	9337	Console Decal "T" Series	1
109	7991	Washer Shim 1" I.D.	4
110	RCL 882002-00	Hub Cap Washer 1" I.D.	4
111	6778	Track Rod	1
112	8016	Rod Adjuster	1
113	7092	Swivel	1
114	7190	Spring Compression	1
115	7852	Oil Drain and Adaptor (T1400,T1600,T1800)	1
116	4309	Nut M8 "J" Type	1
117	3712	Washer Shim 20g	8
118	1663	"E" Clip (Am 1500-75)	2
119	3436	Label Drive Disengage	1
120	3435	Label Drive Engage	1

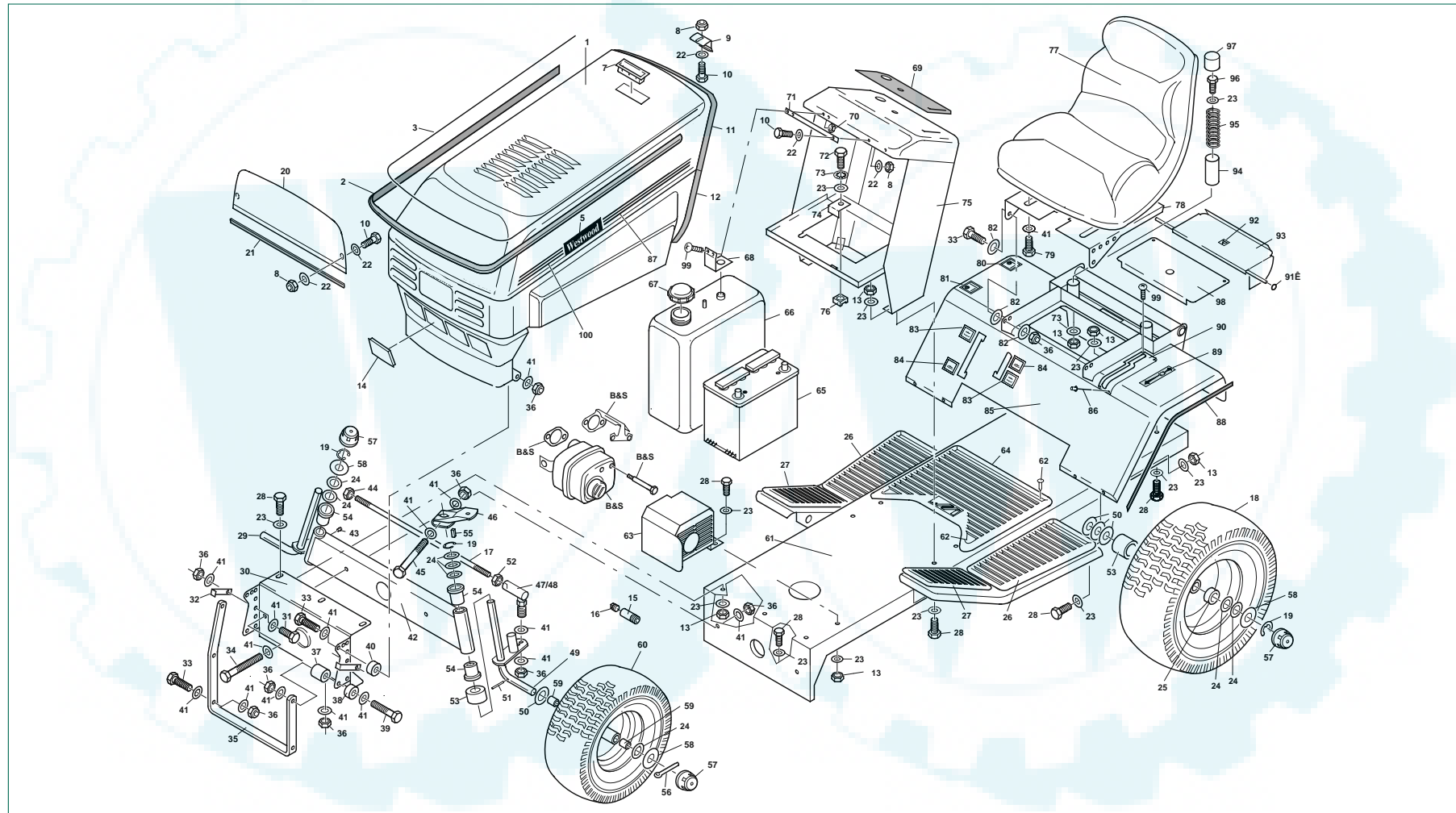
THE BEST OF BRITISH ENGINEERING



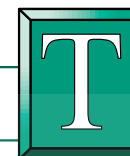
Westwood



Tractor Chassis and Upper Body Panels – 1012 and 1012H



THE BEST OF BRITISH ENGINEERING



## Tractor Chassis and Upper Body Panels – 1012 and 1012H

ITEM	PART NO.	DESCRIPTION	QTY
1	8740	Bonnet	1
2	8853	Bonnet Trim Black	1
3	8996	Red Insert Bonnet Trim	1
5	9370	Westwood Decal	2
7	8896	Bonnet Hand Grip	1
8	1270	Nut 1/2" UNF Nyloc	5
9	8551	Bonnet Catch	1
10	1156	Setscrew 1/2" UNF x 3/4"	5
11	4832	Bonnet Trim	1
12	3583	Bonnet Trim	2
13	1273	3/8" UNF Nyloc Nut	18
14	8927	Blanking Plate	4
15	7537	Oil Drain Extension Pipe	1
16	3742	Drain Plug 3/8" B.S.P.	1
17	6778	Track Rod	1
18	9042	Rear Wheel Assembly 18" 3/4" Bore	2
*	7527	Wheel Rim	2
*	7517	Tyre	2
*	1588	Inner Tube	2
19	1663	"E" Clip (AM 1500-75)	5
20	9047	Heatshield	1
21	4832	Trim	1
22	1331	Washer 1/2" Dia. (T3L)	10
23	3613	Washer 3/8" Dia. (T32)	36
24	3712	Washer Shim 20G	14
25	1980	Wheel Spacer	4
26	5645	Foot Mats RH and LH Rear	1 pair
27	5644	Foot Mats RH and LH Front	1 pair
28	1982	Setscrew 3/8" UNF x 3/4"	18
29	9000	Stub Axle RH	1
30	8252	Chassis Bkt. Front	1
31	2015	3/8" x 1" Setscrew	2
32	9029	Bonnet Stop Bkt.	2
33	1948	Setscrew 3/8" UNF x 1 1/4"	4
34	1267	Bolt 3/8" UNF x 2 1/2"	3
35	9094	Hitch Bkt.	1
36	1324	Nut 3/8" UNF Nyloc	25
37	6636	Spacer	2

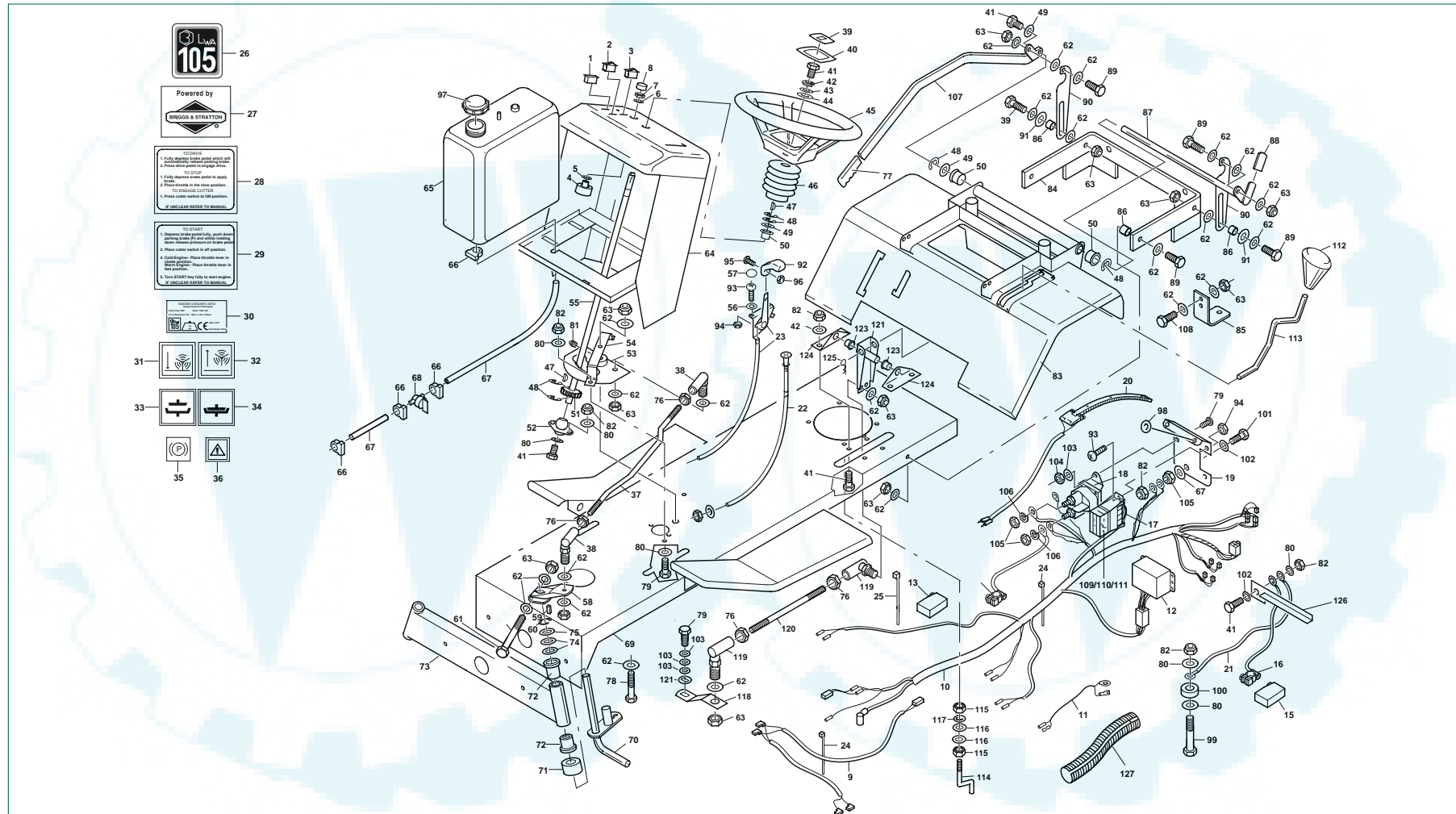
ITEM	PART NO.	DESCRIPTION	QTY
38	1680	Spacer	2
39	1319	Bolt 3/8" UNF x 2"	2
40	3683	Spacer	3
41	1323	Washer 3/8" Dia. (T3L)	50
42	2296	Axle Beam	1
43	1423	Grease Nipple	2
44	6776	Locknut 3/8" UNF LH	2
45	1267	Bolt 3/8" UNF x 2 1/2"	1
46	4930	Steering Arm	1
47	6487	Ball Joint RH	1
48	6515	Ball Joint LH	1
49	8998	Stub Axle LH	1
50	3713	Wheel Washer Thick	10
51	1553	Roll Pin 3/8" Dia. x 1 1/2"	2
52	3792	Locknut 3/8" UNF	2
53	5479	Spacer Stub Axle	4
54	3355	Flanged Bush Delryn 500 Axle BM	4
55	1098	Woodruff Key 3/8" x 1"	1
56	1227	Split Pin 3/8" Dia. x 1 1/2"	2
57	4230	Hub Cap	5
58	3908	Washer Hub Cap	5
59	3354	Bush Oilite	4
60	7520	Front Wheel Assembly 15"	2
*	7528	Wheel Rim	2
*	7518	Tyre	2
*	1540	Inner Tube	2
61	8556	Chassis	1
62	4958	Fir Tree Fastener	6
63	9049	Heatshield, Muffler 1300	1
64	8850	CTR - Foot Mat	1
65	1209	Battery 12V Type 138	1
66	3960	Fuel Tank	1
67	3963	Cap Fuel Tank	1
68	8202	Bkt. Fuel Tank	1
69	8902	Console Top Decal	1
70	1053	2 BA Nyloc Nut	3
71	8553	Plate Bonnet Catch	1
72	5480	Setscrew 8 x 30	3

ITEM	PART NO.	DESCRIPTION	QTY
73	2048	Washer 3/8" Shakeproof	3
74	7776	Bkt. Battery Clamp	1
75	8919	Console Assembly	1
76	4309	Nut M8 "J" Type	1
77	9360	Seat Low Back (with rem. Seat Switch) (9489)	1
78	9361	Plate Seat	1
79	2034	Setscrew 3/8" UNC x 3/4"	4
80	7361	Label P.G.C. Lower	1
81	7369	Label P.G.C. Raise	1
82	4124	3/8" x 1" Washer	6
83	3435	Label Drive Disengage	2
84	3436	Label Drive Engage	2
85	9363	Ctr. Body Assembly	1
86	7595	Rivets (Black)	3
87	9368	Bonnet Stripe R.H.	1
88	6305	Trim	2
89	RCL766182-00	Manual Label	1
90	9391	Gear Cover Plate (Hydro) (9366 Manual)	1
91	4831	Star Lock	2
92	4967	Label Small Warning	1
93	8329	PTO Flap	1
94	9422	Spring Sleeve Plastic	2
95	2898	Seat Spring	2
96	2031	Setscrew 3/8" UNF x 1"	2
97	8501	Cap Seat Spring	2
98	9362	Plate PTO Cover	1
99	1735	Screw 2 BA x 3/4"	3
100	9367	Bonnet Stripe L.H.	1

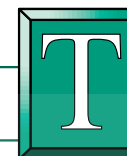
T H E B E S T O F B R I T I S H E N G I N E E R I N G



Steering, Gear Change and Electrical Controls – T1400, T1800 and T1600 Early



THE BEST OF BRITISH ENGINEERING



**Steering, Gear Change and Electrical Controls – T1400, T1800 and T1600 Early**

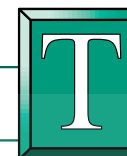
ITEM	PART NO.	DESCRIPTION	QTY
1	8841	Light Battery Charge	1
2	8161	Switch Cutter Engage (with symbols)	1
3	8160	Switch Headlights (with symbols)	1
4	2703	Switch Ignition	1
5	7496	Int. Teethsp. Washer	1
6	6523	Ignition Washer	1
7	2065	Ignition Locknut	1
8	5600	Bezel	1
9	9565	Headlight Harness	1
10	8063	Loom	1
11	8557	Loom Adaptor	1
12	8062	P.C.B. Assembly	1
13	9297	Terminal Cover (Red)	1
14	8233	Battery Connection (Positive)	1
15	RCL472000-00	Terminal Cover (Black)	1
16	8234	Battery Connection (Negative)	1
17	8176	Fuse Holder	1
18	1530	Solenoid	1
19	8906	Bkt. Solenoid & Fuse Holder	1
20	9489	Seat Switch (Spare only) Supplied with seats	1
21	7631	Earth Cable	1
22	3559	Choke Control	1
23	8569	Throttle Control Assy & Cable	1
24	MX1286	Cable Tie	3
25	RCL794000-00	Cable Tie (Re-usable)	2
26	9111	Label Sound Power Level (105dB)	1
27	9084	Label Powered by Briggs	1
28	7918	Label To Drive (Manual)	1
29	7917	Label To Start (Manual)	1
30	RCL766101-00	Decal - Serial No. (Prod. Code No.9561)	1
31	7361	P.G.C. Lower Label	1
32	7369	P.G.C. Raise Label	1
33	3436	Label & P.T.O. Disengage	1
34	3435	P.T.O. Engage	1
35	3437	Label Parking Brake	1
36	4967	Label Small Caution	3
37	5485	Steering Rod	1
38	6487	Ball Joint R.H.	2
39	9380	Ransomes Badge	2
40	9379	Steering Wheel Cap	1
41	1982	3/8" UNF x 3/4" Setscrew	3
42	083-0802	M8 Spring Washer	1
43	3613	Washer 3/8" Dia.	2

ITEM	PART NO.	DESCRIPTION	QTY
44	4124	3/8" x 1" Washer	1
45	9378	Steering Wheel	1
46	9426	Gaiter	1
47	1104	Woodruff Key 3/8" x 3/4"	2
48	2589	"E" Clip No.1500-62	6
49	1975	3/8" x 1" x 16G Washer	3
50	3539	Bush Steering Column	3
51	2276	Steering Gear	1
52	1699	Steering Foot	1
53	3403	Steering Quadrant	1
54	3401	Bridge Steering Quadrant	1
55	9377	Steering Column	1
56	3091	Cup Washer (White Plastic)	2
57	3092	Screw Cover (Black Plastic)	2
58	4930	Steering Arm	1
59	1098	Woodruff Key 3/8" x 1"	1
60	1663	"E" Clip (A.M. 1500-75)	2
61	1267	Bolt 3/8" UNF x 2 1/2"	1
62	1323	Washer 3/8" Dia. (T3L)	28
63	1324	Nut 3/8" UNF Nyloc	3
64	8919	Console Assy	1
65	3960	Fuel Tank	1
66	3940	Snapper Hoseclip No.6	4
67	3859	Pipe Fuel Supply (Length as required)	1
68	7331	Fuel Cock	1
69	8556	Chassis	1
70	8998	Stub Axle LH	1
71	5479	Spacer Stub Axle	2
72	3355	Flanged Bush Delryn 500 Axle BM	4
73	2296	Axle Beam	1
74	3712	Washer, Shim 20g	As req.
75	3713	Wheel Washer Thick	As req.
76	3792	3/8" UNF Locknut	5
77	6083	Handgrip	1
78	7760	3/8" UNF x 4" Bolt	1
79	1156	Setscrew 1/4" UNF x 3/8"	4
80	3613	Washer 3/8" Dia.	10
81	1423	Grease Nipple	1
82	1273	Nut 3/8" UNF Nyloc	19
83	9363	CTR. Body Assembly	1
84	8215	Mounting Frame	1
85	2246	Tow Hitch	1
86	3146	Spacer	4

ITEM	PART NO.	DESCRIPTION	QTY
87	8285	Lifting Shaft	1
88	7851	Rectangular Sleeve	1
89	1948	Setscrew 3/8" UNF x 1 1/4"	6
90	7715	Lifting Arm	2
91	014-1301	1/2" x 1" Washer x 17g	2
92	7763	Knob	1
93	1734	2BA x 1/2" Screw	2
94	1053	Nut 2BA Nyloc	2
95	7764	8-32 UNC x 3/8" Taptic Screw	1
96	7765	8-32 Nut	1
97	3963	Cap Fuel Tank	1
98	013-0601	1/2" Shakeproof	4
99	1318	3/8" UNF x 2" Bolt	4
100	2351	Engine Spacer	4
101	2031	Setscrew 3/8" UNF x 1"	3
102	2048	Washer 3/8" Shakeproof	2
103	1331	Washer 1/2" Dia. T3L	10
104	1270	Nut 1/2" UNF Nyloc	2
105	1969	3/8" UNF Locknut	3
106	083-0802	M8 Spring Washer	2
107	8280	Lifting Lever	1
108	2015	3/8" UNF x 1" Setscrew	2
109	8177	Fuse 1 amp	1
110	8178	Fuse 10 amp	1
111	6789	Fuse 20 amp	2
112	2649	Knob 1/2"	1
113	9372	Gear Lever	1
114	6662	Belt Guide Pin	1
115	090-08	M8 Nyloc Nut	2
116	1105	Washer 3/8"	2
117	2045	3/8" Shakeproof Washer	1
118	6624	Lever Cranked (5 Speed)	1
119	6487	Ball Joint RH	2
120	9392	3/8" UNF Stud Gear Change Rod	1
121	4242	TX Gearchange Washer	1
122	9373	Gear Lever Assembly	1
123	3541	Bush Medium Nylon 1/2" x 3/8"	2
124	9376	Pivot Bracket	2
125	4086	"R" Clip Small	1
126	9458	Battery Location Plate	1
127	9004	Convuluted Tubing	As req.

THE BEST OF BRITISH ENGINEERING





## Steering, Gear Change and Electrical Controls – 1012

ITEM	PART NO.	DESCRIPTION	QTY
1	4972	Decal LWA100	1
2	9084	Decal Powered By Briggs & Stratton	1
3	8583	To Drive Manual	1
4	8582	To Start Manual	1
5	3960	Fuel Tank	1
6	3963	Cap	1
7	3940	Snapper Hoseclip No 6	4
8	9377	Steering Column	1
9	3859	Pipe Fuel Supply (Length as required)	1
10	7331	Fuel Cock	1
11	2296	Axle Beam	1
12	5479	Spacer Stub Axle	2
13	3355	Flanged Bush Delryn 500 Axle BM	4
14	1098	Woodruff Key	1
15	2847	Washer Jockey Pulley	2
16	1267	3/8" UNF x 2 1/2" Bolt	1
17	8228	Lever Cranked (Gear Change 6 Speed)	1
18	1324	Nut 3/8" UNF Nyloc	14
19	1323	Washer 3/8" Dia. (T3L)	26
20	6487	Ball Joint RH	3
21	3792	3/8" UNF Locknut	3
22	6775	Steering Rod	1
23	8296	Chassis (S1300)	1
24	9373	Gear Lever Assembly	1
25	3541	Bush Medium Nylon 1/2" x 3/8"	2
26	9376	Pivot Bracket	2
27	4086	"R" Clip Small	1
28	6776	3/8" UNF Locknut LH	1
29	6515	Ball Joint LH (identified by groove)	1
30	2276	Steering Gear	1
31	1699	Steering Foot	1
32	2589	"E" Clip (AM 1500-75)	6
33	1104	Woodruff Key 3/8" x 3/4"	2
34	3403	Steering Quadrant	1
35	1423	Grease Nipple	1
36	3401	Bridge Steering Quadrant	1
37	2703	Switch Ignition	1
38	7496	Int. Teeth Sp. Washer	1

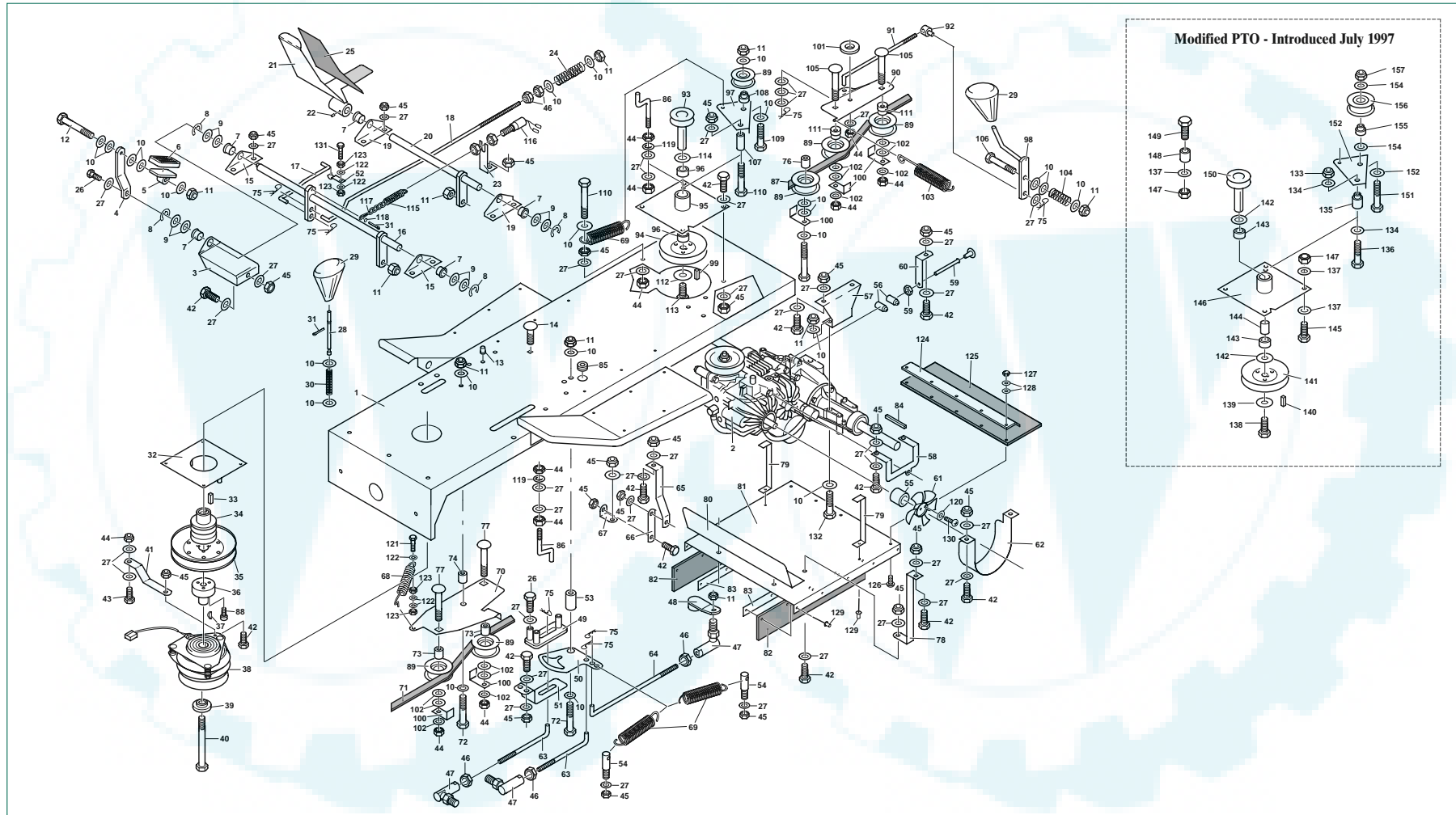
ITEM	PART NO.	DESCRIPTION	QTY
39	8919	Console Assembly	1
40	6523	Ign. Washer	1
41	2065	Ign. Locknut	1
42	5600	Bezel	1
43	9458	Battery Location Plate	1
44	1663	"E" Clip Lam 1500-75	2
45	9380	Ransomes Badge	1
46	9379	Steering Wheel Cap	1
47	1982	3/8" UNF x 3/4" Setscrew	2
48	083-0802	M8 Spring Washer	2
49	3613	Washer 3/8" Dia.	2
50	4124	3/8" x 1" Washer	1
51	9378	Steering Wheel	1
52	9426	Gaiter	1
53	3539	Bush Steering Column	3
54	7763	Knob	1
55	RCL794000-00	Cable Tie	As req.
56	MX1286	Cable Tie	As req.
57	7348	Throttle Cable	1
58	1975	3/8" x 1" x 16g Washer	2
59	9476	3/8" UNF Stud Gear Change Rod	1
60	8280	Lifting Lever	1
61	6083	Handgrip	1
62	7715	Lifting Arm	2
63	9363	Ctr. Body Assembly	1
64	8215	Mounting Frame	1
65	8285	Lifting Shaft	1
66	7851	Rectangular Sleeve	1
67	3146	Spacer	4
68	2246	Tow Hitch	1
69	2649	Knob 1/2"	1
70	9372	Gear Lever	1
71	9489	Seat Switch (Spares only) Supplied with seats	1
72	1734	2BA x 1/2" Screw	1
73	1530	Solenoid	1
74	9297	Terminal Cover - Red	1
75	8233	Battery Connection Positive	1
76	7760	3/8" UNF x 4" Bolt	1

ITEM	PART NO.	DESCRIPTION	QTY
77	4930	Steering Arm	1
78	8073	Wiring Loom	1
79	7631	Earth Cable	1
80	8234	Battery Connection Negative	1
81	RCL472000-00	Terminal Cover Black	1
82	2351	Eng. Spacer	4
83	1331	Washer 1/2" Dia. T3L	7
84	1948	Setscrew 3/8" UNF x 1 1/4"	6
85	2015	3/8" UNF x 1" Setscrew	2
86	1318	3/8" UNF x 2" Bolt	4
87	1273	Nut 3/8" UNF Nyloc	18
88	2048	Washer 3/8" Shakeproof	2
89	1969	3/8" UNF Locknut	3
90	2031	Setscrew 3/8" UNF x 1	3
91	1156	Setscrew 1/2" UNF x 3/4"	2
92	1053	Nut 2BA Nyloc	2
93	1270	Nut 1/2" UNF Nyloc	1
94	7764	8-32 UNC x 3/8" Taptite Screw	1
95	7765	8-32 Nut	1
96	3712	Washer, Shim 20g	As req.
97	3713	Wheel Washer Thick	As req.
98	014-1301	1/2" x 1" Washer x 17g	2
99	8998	Stub Axle LH	1
100	9004	Convuluted Tubing	As req.
111	*	1 Amp In-Line Fuse	1
112	*	10 Amp In-Line Fuse	1

THE BEST OF BRITISH ENGINEERING



Tractor Chassis, PTO, Brake & Cutter Controls – T1400H, T1800H and T1600H Early



THE BEST OF BRITISH ENGINEERING





**Tractor Chassis, PTO, Brake & Cutter Controls – T1400H, T1800H and T1600H Early**

ITEM	PART NO.	DESCRIPTION	QTY
1	9140	Chassis Assy. T14, T16 & 18 Hydros	1
2	7649	Axle Hydro 212-3010L	1
3	7087	Support Pedal Shaft	1
4	9132	Brake Arm	1
5	1551	Pedal Brake	1
6	MX681	Foot Pedal Rubber	1
7	3539	Bush Nylon	5
8	2589	“E” Clip No.1500-62	4
9	1975	3/8" x 1" x 16G. Washer	8
10	1323	Washer 3/8" DIA. (T3 LP)	24
11	1324	Nut 3/8" UNF Nyloc	10
12	1997	Bolt 3/8" UNF x 1 1/2"	1
13	MX951	Grommet	1
14	7418	M8 x 25 Carriage Bolt	1
15	6869	Foot Pedal Shaft Bkt.	2
16	9284	Brake Pedal Shaft Assy.	1
17	9133	Rod Parking Brake	1
18	7824	Brake Rod	1
19	7366	Foot Pedal Shaft Bkt.	2
20	9131	Shaft Pedal (Operating)	1
21	9128	Foot Pedal Assy.	1
22	MX244	Spirol Pin 3/8" x 1 1/4" H.DY.	2
23	6394	Bracket Safety Switch (Long)	1
24	6925	Spring	1
25	6306	Flex Tread	As reqd.
26	4107	Setscrew 3/8" UNF x 1/2" Patch Loc.	4
27	1105	Washer 3/8" DIA. T3LP	12
28	7383	Plunger Brake	1
29	2648	Knob 3/8"	2
30	2003	Spring Park Brake	1
31	1223	1/8" x 3/8" Steel Split Pin	3
32	6944	Hydro Belt Guide Assy.	1
33	1602	Key 1/2" Sq. x 1"	1
34	7662	Pulley Block (Upper)	1
35	3750	Pulley 7" Deep Form-Spaced	1
36	7267	Pulley Block (Lower)	1

ITEM	PART NO.	DESCRIPTION	QTY
37	3728	Woodruff Key 1/4" x 3/8"	1
38	7259	Clutch Electric “T” Series	1
39	8552	Shouldered Plug	1
40	027-11127	Bolt 3/8" UNF x 5" Patch Loc.	1
41	7090	Brace. Electromagnetic Clutch	1
42	1982	Setscrew 3/8" UNF x 3/4"	18
43	030-0825	M8 x 25 Setscrew	1
44	090-08	M8 Nyloc Nut	8
45	1273	3/8" UNF Nyloc Nut	18
46	3792	3/8" UNF Locknut	5
47	6487	Ball Joint R.H.	3
48	7879	Gear Arm Assy.	1
49	6915	Rod Guide Assy.	1
50	7797	Neutral Quadrant	1
51	6914	Rod Guide Long	1
52	9134	Parking Brake Rod Support Bkt.	1
53	6862	Neutral Quadrant Boss	1
54	3995	Hinge Pillar	2
55	7884	Fan Boss	1
56	6917	Solderless Nipple	2
57	7796	Hanger Bracket	2
58	9138	Support Bkt. Axle L.H.	1
59	9161	Dump Valve Cable	1
60	9269	Dump Valve Cable Support Bkt.	1
61	6800	Fan (Plastic) 5"	1
62	7794	Fan Guard	1
63	6867	Neutral Gear Rod	2
64	7881	Gear Rod (Long)	1
65	9137	TX. Support Bkt. RH.	1
66	7893	Support Link	1
67	7894	Bracket (Support Link)	1
68	M4027	Spring	1
69	2103	Clutch Spring	4
70	9135	Jockey Plate	1
71	7229	Belt A79	1
72	1319	Bolt 3/8" UNF x 2"	1

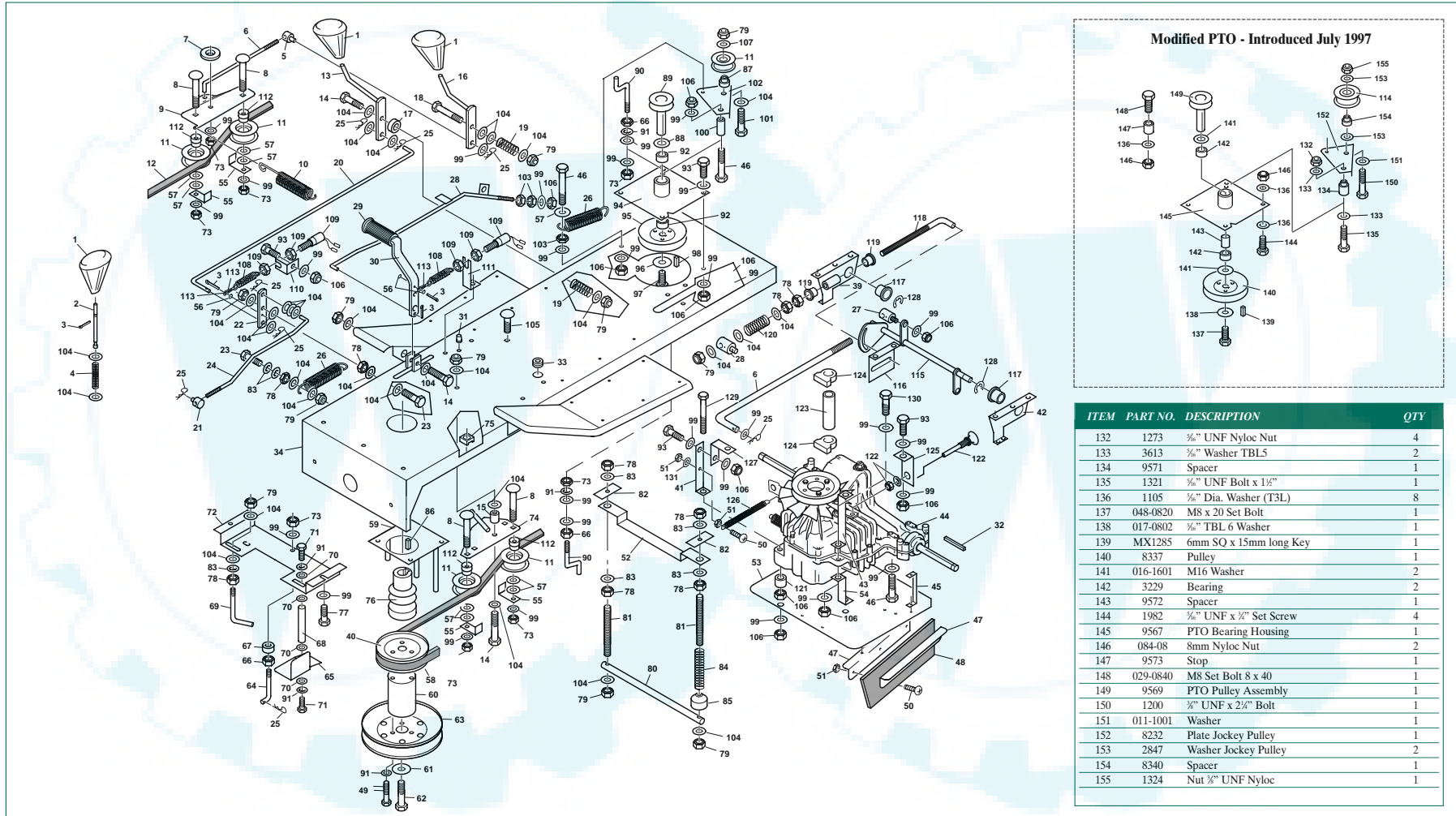
ITEM	PART NO.	DESCRIPTION	QTY
73	8687	Bush, Jockey Pulley	2
74	6812	Bush, Jockey Arm Pivot	1
75	4086	“R” Clip (Small)	6
76	5478	Spacer Jockey Pulley	1
77	074-0860	M8 x 60 Carriage Bolts	2
78	7891	Support L.H. Front	1
79	7892	Support Bkts. Rear	1
80	7916	Deflector Extension	1
81	7897	T/X Grass Deflector	1
82	7899	Rubber Flap	2
83	7898	Retaining Strip	2
84	3841	Drive Key 1/2" Sq. x 2"	2
85	4152	Grommet 3/8" Open Chassis	3
86	6662	Belt Guide Pin	3
87	7726	Belt P.T.O. (A84 1/2)	1
88	7833	3/8" x 1 1/4" Socket, Cap Head Screw	3
89	9488	Jockey Pulley	6
90	8310	Jockey Plate P.T.O.	1
91	7107	Rod Adjustable P.T.O.	1
92	6817	Swivel Adjuster Rod	1
93	8286	Pulley & Shaft Assy P.T.O. Drive	1
94	8337	Pulley Assy 5"	1
95	8271	P.T.O. Mounting Plate	1
96	3229	Bearing	2
97	8232	Plate Jockey Pulley	1
98	8538	Lever P.T.O. Engage	1
99	MX1285	6mm Sq. x 15 3/8" Long	1
100	5735	Belt Guide	5
101	8418	Spacer Jockey Plate	1
102	3613	3/8" Washer TBL5	8
103	2594	Spring	1
104	1613	Spring	1
105	074-0845	M8 x 45 Carriage Bolt	2
106	7285	3/8" UNF x 3 3/4" Bolt	1
107	8341	Spacer Jockey Plate P.T.O.	1
108	8340	Spacer	1

T H E B E S T O F B R I T I S H E N G I N E E R I N G



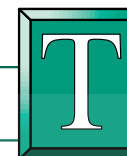


Tractor Chassis, PTO, Brake & Cutter Controls – 1012H



ITEM	PART NO.	DESCRIPTION	QTY
132	1273	3/8" UNF Nyloc Nut	4
133	3613	3/8" Washer TBL5	2
134	9571	Spacer	1
135	1321	3/8" UNF Bolt x 1 1/2"	1
136	1105	3/8" Dia. Washer (T3L)	8
137	048-0820	M8 x 20 Set Bolt	1
138	017-0802	3/8" TBL 6 Washer	1
139	MX1285	6mm SQ x 15mm long Key	1
140	8337	Pulley	1
141	016-1601	M16 Washer	2
142	3229	Bearing	2
143	9572	Spacer	1
144	1982	3/8" UNF x 3/4" Set Screw	4
145	9567	PTO Bearing Housing	1
146	084-08	8mm Nyloc Nut	2
147	9573	Stop	1
148	029-0840	M8 Set Bolt 8 x 40	1
149	9569	PTO Pulley Assembly	1
150	1200	3/8" UNF x 2 1/4" Bolt	1
151	011-1001	Washer	1
152	8232	Plate Jockey Pulley	1
153	2847	Washer Jockey Pulley	2
154	8340	Spacer	1
155	1324	Nut 3/8" UNF Nyloc	1

THE BEST OF BRITISH ENGINEERING



## Tractor Chassis, PTO, Brake & Cutter Controls – 1012H

ITEM	PART NO.	DESCRIPTION	QTY
1	2648	Knob 3/8"	3
2	7383	Plunger Brake	1
3	1223	3/8" x 3/8" Steel Split Pin	3
4	2003	Spring Park Brake	1
5	6817	Swivel Adjuster Rod	1
6	7107	Rod Adjustable	2
7	8418	Spacer PTO Jockey	1
8	074-0845	M8 x 45 Carriage Bolt	4
9	8310	Plate PTO Jockey Pulley	1
10	2594	Spring	1
11	9488	Jockey Pulley	6
12	7726	Belt PTO (A 84 1/2)	1
13	6400	Lever Engage	1
14	1319	3/8" UNF x 2" Bolt	2
15	6812	Bush Jockey Plate	1
16	8538	Lever PTO Engage	1
17	3683	Spacer	3
18	7285	3/8" UNF x 3 3/4" Bolt	1
19	1613	Spring	2
20	RCL564019-001	Engage Rod (long)	1
21	1695	Swivel Engage Rod	1
22	9093	Transfer Link	1
23	1054	Bolt 3/8" UNF x 1 1/2"	1
24	8814	Engage Rod	1
25	4086	"R" Clip Small	8
26	2103	Clutch Spring	2
27	8817	Swivel	1
28	8676	Brake Rod	1
29	8912	Foot Pedal Rubber	1
30	8218	Foot Pedal	1
31	MX951	Grommet	1
32	RCL 812000-00	Key 3/8" Square x 2"	2
33	4152	Grommet Open Chassis	3
34	8556	Chassis	1
35	2356	Plate Brake Extension	1
36	1270	1/4" UNF Nut Nyloc	1
37	1331	Washer 1/2" Dia.	1
38	1156	Setscrew 1/2" UNF x 3/8"	1
39	8726	TX Support Bkt. Rear RH	1
40	7301	Pulley 5" Deep Form	1
41	8681	TX Support Bkt. RH Front	1
42	8727	TX Support Bkt. Rear LH	2
43	8680	TX Support Bkt. LH Front	1
44	8350	Gearbox Hydro (Sundstrand)	1
*	9502	Fan for Hydro	1

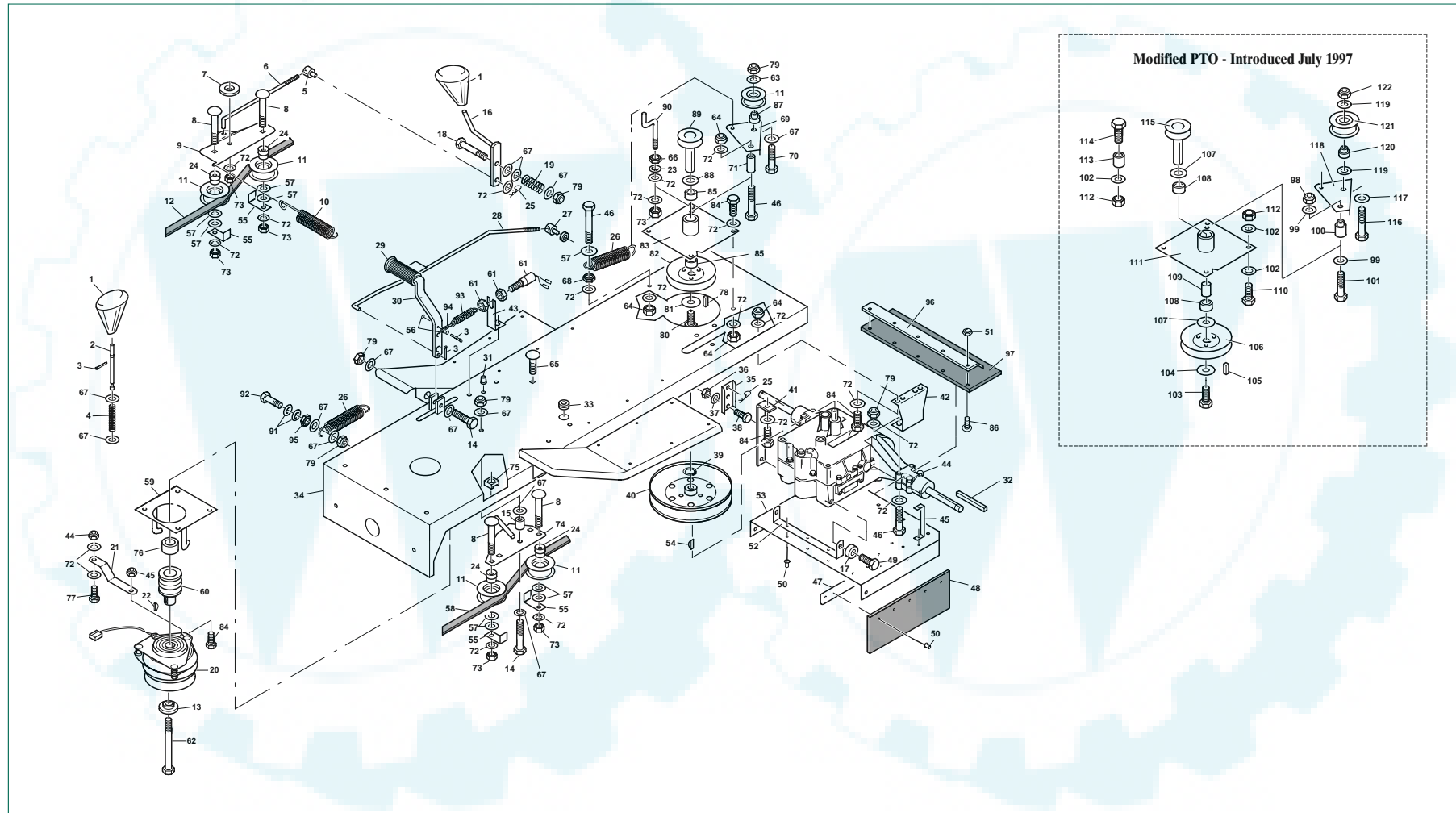
ITEM	PART NO.	DESCRIPTION	QTY
*	9051	Pulley for Hydro	1
45	6905	Support Bkt. Grass Def. Rear	2
46	1978	3/8" UNF x 2 1/2" Bolt	4
47	3323	Galv. Support Bkts	2
48	8732	Flap Rubber	1
49	023-08114	Bolt 3/8" UNF x 4 1/2" H.T.	3
50	1735	2BA x 3/8" Screw	3
51	1053	2BA Nut Nyloc	3
52	9291	Support Bracket	1
53	4949	Grass Deflector	1
54	8682	Grass Deflector Support Bkt. LH Front	1
55	5735	Belt Guide	5
56	1067	Washer 4BA	4
57	3613	3/8" Washer TBL5	8
58	7239	Belt Transmission A81	1
59	8460	Belt Guide Plate Assembly	1
60	8452	Eng. Blk (1000 Series)	1
61	6536	3/8" TBL5 Pulley Washer	1
62	027-11114	3/8" UNF x 4 1/2" Bolt Tufloc	1
63	1558	7" Pulley	1
64	2139	Brake Cable Retaining Pin	1
65	7542	Safety Guard	1
66	061-08	M8 Nut (Full)	4
67	3397	Spacer	1
68	7541	Post Safety Guard	1
69	4256	Belt Guide Pin	1
70	1331	1/2" Washer T3L	4
71	1156	1/4" UNF x 3/8" Set Screw	2
72	8284	Guard Plate	1
73	090-08	M8 Nut Nyloc	11
74	8236	Jockey Plate	1
75	4309	Nut M8 "J" Type	2
76	7662	Eng. Block (Upper)	1
77	030-0825	M8 x 25 Set Screw	2
78	1422	Nut 3/8" UNF (Full)	4
79	1324	Nut 3/8" UNF Nyloc	13
80	3991	Hanger Bar	1
81	7283	Stud Hanger Bar	2
82	8262	Plate Chassis Strengthening	2
83	1633	Washer 3/8" Dia. Shakeproof	4
84	8674	Spring	1
85	4328	Spacer Hanger Bar	1
86	1602	Key 1/2" SQ x 1" Engine Block	1
87	8340	Spacer	1
88	016-1601	M16 Washer	2

ITEM	PART NO.	DESCRIPTION	QTY
89	8286	Pulley & Shaft Assembly PTO Drive	1
90	6662	Belt Guide Pin	3
91	2045	3/8" Shakeproof Washer	8
92	3229	Bearing	2
93	1982	3/8" UNF x 1/2" Set Screw	10
94	8271	PTO Mounting Plate	1
95	8337	Pulley Assembly 5"	1
96	017-0802	3/8" TBL 6 Washer	1
97	048-0820	M8 x 20 Set Bolt	1
98	MX1285	6mm SQ x 15mm long	1
99	1105	Washer 3/8" Dia. (T3L)	41
100	8341	Spacer PTO Plate	1
101	1200	3/8" UNF x 2 1/2" Bolt	1
102	8232	Plate Jockey Pulley	1
103	1969	Nut 3/8" UNF	1
104	1323	Washer 3/8" Dia. (T3L)	28
105	7418	8M x 25 Carriage Bolt	1
106	1273	3/8" UNF Nyloc Nut	23
107	2847	Washer Jockey Pulley	2
108	3463	Spring	1
109	3414	Switch Brake & Cutter Dk. Safety	2
110	6393	Bracket Safety Sw. (Short) (Cutter Deck)	1
111	6394	Bracket Safety Sw. (Long) (Brake)	1
112	8220	Shouldered Spacer (Jockey Pulley)	4
113	2592	Chain	Links as req.
114	5822	Pulley	1
115	9349	Layshaft Assembly	1
116	9383	Centralising Plate	1
117	3539	Bush	2
118	8672	Centralising Rod	1
119	8686	Bush (Nylon)	2
120	8674	Compression Spring	1
121	3329	Spacer	1
122	8731	Cable, Dump Valve	1
123	8767	Vent Hose	1
124	8765	Hose Clip SNP:14	2
125	8684	Bracket, Dump Valve	1
126	8720	Spring	1
127	8683	TX Support Bkt. RH Front	1
128	2589	"E" Clip	2
129	1312	Bolt 3/8" UNF x 3"	1
130	1318	Bolt 3/8" UNF x 2"	1
131	1962	Washer 2BA	1
* Not Shown			

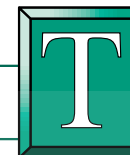
THE BEST OF BRITISH ENGINEERING



*Tractor Chassis, PTO, Brake & Cutter Controls – T1400, T1800 and T1600 Early*



THE BEST OF BRITISH ENGINEERING



**Tractor Chassis, PTO, Brake & Cutter Controls – T1400, T1800 and T1600 Early**

ITEM	PART NO.	DESCRIPTION	QTY
1	2648	Knob 3/8"	2
2	7383	Plunger Brake	1
3	1223	1/8" x 3/8" Steel Split Pin	2
4	2003	Spring Park Brake	1
5	6817	Swivel Adjuster Rod	1
6	7107	Rod Adjustable	1
7	8418	Spacer PTO Jockey	1
8	074-0845	M8 x 45 Carriage Bolt	4
9	8310	Plate PTO Jockey Pulley	1
10	2594	Spring	1
11	9488	Jockey Pulley	6
12	7726	Belt PTO (A 84 1/2)	1
13	8552	Shouldered Plug	1
14	1319	3/8" UNF x 2" Bolt	2
15	6812	Bush Jockey Plate	1
16	8538	Lever PTO Engage	1
17	8394	Spacer	2
18	7285	3/8" UNF x 3 3/4" Bolt	1
19	1613	Spring	1
20	7259	Clutch Electric "T" Series	1
21	7090	Brace. Electromagnetic Clutch	1
22	3728	Woodruff Key 1/2" UNF x 3/4"	1
23	2045	3/8" Shakeproof Washer	3
24	8220	Shouldered Spacer (Jockey Pulley)	4
25	4086	"R" Clip Small	2
26	2103	Clutch Spring	2
27	1694	Swivel	1
28	8515	Brake Rod	1
29	8912	Foot Pedal Rubber	1
30	8218	Foot Pedal	1
31	MX951	Grommet	1
32	RCL 812000-00	Key 3/8" Square x 2"	2
33	4152	Grommet Open Chassis	3
34	8556	Chassis	1
35	2356	Plate Brake Extension	1
36	1270	1/4" UNF Nut Nyloc	1
37	1331	Washer 1/2" Dia.	1
38	1156	Setscrew 1/2" UNF x 3/8"	1
39	1996	Circlip External 3/8" Dia.	1
40	8295	Pulley Transaxle	1
41	2831	TX Support Bkt. RH Front	2
42	3483	TX Support Bkt. Rear	2

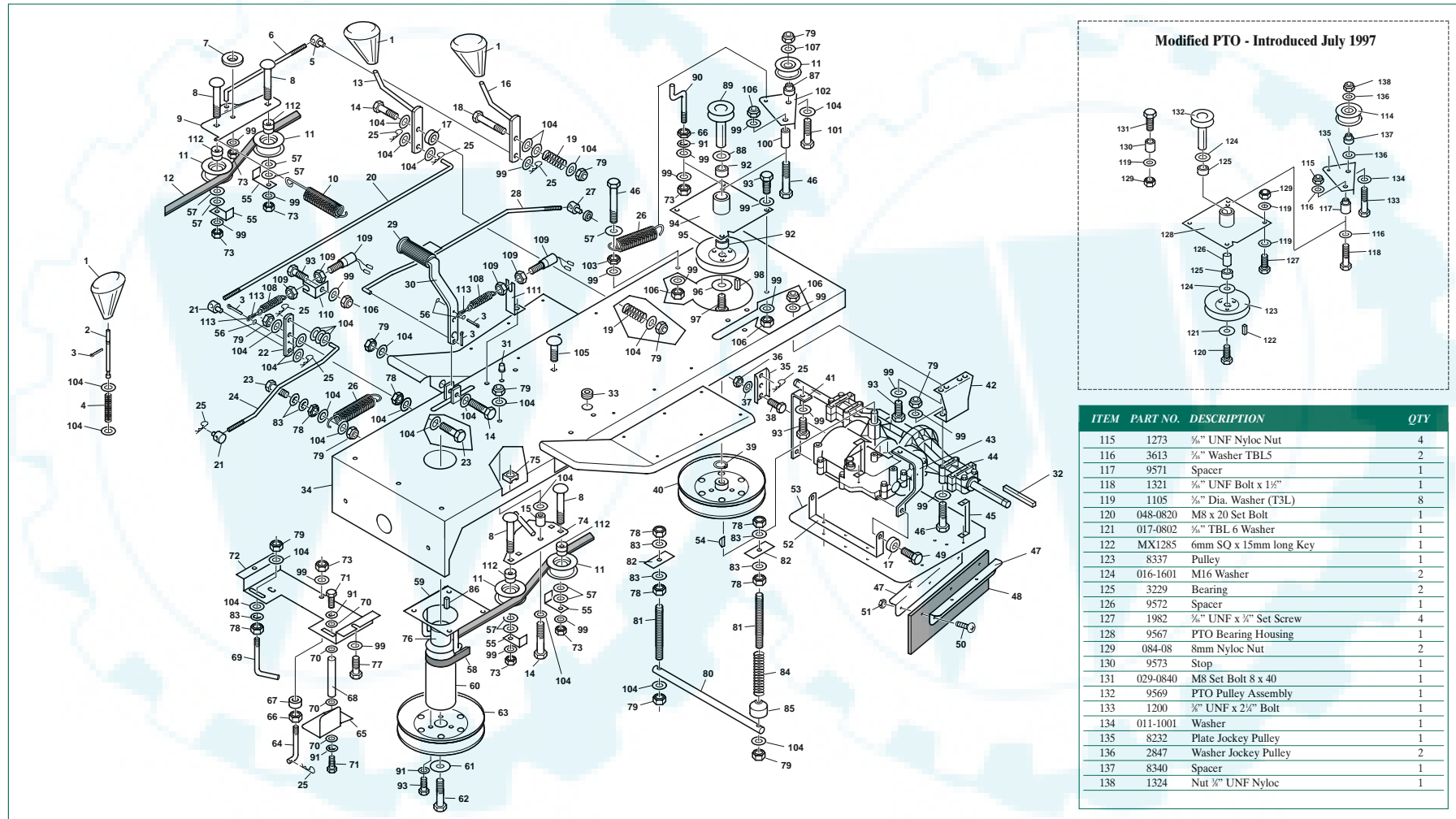
ITEM	PART NO.	DESCRIPTION	QTY
43	6394	Bracket Safety Sw. (Long) (Brake)	1
44	2019	Transaxle Heavy Duty 801 (Peerless)	1
45	8393	Support Bkt. Grass Def. Rear	2
46	1978	3/8" UNF x 2 1/2" Bolt	6
47	8813	Side Rubber Retaining Strips	2
48	3324	Flap Rubber (Std. Tractors)	1
49	7286	Screw M8 x 25 Tapitite	2
50	4098	Pop Rivet	15
51	1053	2BA Nut Nyloc	3
52	3320	Support Bkt. Grass Deflector front	1
53	8812	Grass Deflector	1
54	1104	Key 3/8" x 3/8"	1
55	5735	Belt Guide	5
56	1067	Washer 4BA	3
57	3613	3/8" Washer TBL5	8
58	1688	Belt Transmission	1
59	7241	Belt Guide Plate Assembly	1
60	7088	Eng. Blk	1
61	3414	Switch Brake & Cutter Dk. Safety	1
62	027-11127	Bolt 3/8" UNF x 5 Patch Loc	1
63	2847	Washer Jockey Pulley	2
64	1273	3/8" UNF Nyloc Nut	20
65	7418	8M x 25 Carriage Bolt	1
66	061-08	M8 Nut	1
67	1323	Washer 3/8" Dia. (T3L)	13
68	1969	Nut 3/8" UNF	1
69	8232	Plate Jockey Pulley	1
70	1200	3/8" UNF x 2 1/2" Bolt	1
71	8341	Spacer PTO Plate	1
72	1105	Washer 3/8" Dia. (T3L)	35
73	090-08	M8 Nut Nyloc	8
74	8236	Jockey Plate	1
75	4309	Nut M8 "J" Type	2
76	7684	Spacer	1
77	030-0825	M8 x 25 Set Screw	1
78	MX1285	6mm SQ x 15mm long Key	1
79	1324	Nut 3/8" UNF Nyloc	6
80	048-0820	M8 x 20 Set Bolt	1
81	017-0802	3/8" TBL 6 Washer	1
82	8337	Pulley Assembly 5"	1
83	8271	PTO Mounting Plate	1
84	1982	3/8" UNF x 3/8" Set Screw	9

ITEM	PART NO.	DESCRIPTION	QTY
85	3229	Bearing	2
86	1732	2BA x 1/2" Screw	5
87	8340	Spacer	1
88	016-1601	M16 Washer	2
89	8286	Pulley & Shaft Assembly PTO Drive	1
90	6662	Belt Guide Pin	1
91	1633	Washer 3/8" Dia Shakeproof	2
92	1054	Bolt 3/8" UNF x 1 1/2"	1
93	3463	Spring	1
94	2592	Chain	Links as Req.
95	1422	Nut 3/8" UNF Nyloc	1
96	4233	Retaining Strip	1
97	8732	Rubber Flap	1
<b>Modified PTO - Introduced July 1997</b>			
98	1273	3/8" UNF Nyloc Nut	4
99	3613	3/8" Washer TBL5	2
100	9571	Spacer	1
101	1321	3/8" UNF Bolt x 1 1/2"	1
102	1105	3/8" Dia. Washer (T3L)	8
103	048-0820	M8 x 20 Set Bolt	1
104	017-0802	3/8" TBL 6 Washer	1
105	MX1285	6mm SQ x 15mm long Key	1
106	8337	Pulley	1
107	016-1601	M16 Washer	2
108	3229	Bearing	2
109	9572	Spacer	1
110	1982	3/8" UNF x 3/8" Set Screw	4
111	9567	PTO Bearing Housing	1
112	084-08	8mm Nyloc Nut	1
113	9573	Stop	1
114	029-0840	M8 Set Bolt 8 x 40	1
115	9569	PTO Pulley Assembly	1
116	1200	3/8" UNF x 2 1/2" Bolt	1
117	011-1001	Washer	1
118	8232	Plate Jockey Pulley	1
119	2847	Washer Jockey Pulley	2
120	8340	Spacer	1
121	5822	Pulley	1
122	1324	Nut 3/8" UNF Nyloc	1

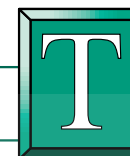
THE BEST OF BRITISH ENGINEERING



### Tractor Chassis, PTO, Brake & Cutter Controls – 1012



THE BEST OF BRITISH ENGINEERING



## Tractor Chassis, PTO, Brake & Cutter Controls – 1012

ITEM	PART NO.	DESCRIPTION	QTY
1	2648	Knob 3/8"	3
2	7383	Plunger Brake	1
3	1223	1/8" x 3/8" Steel Split Pin	3
4	2003	Spring Park Brake	1
5	6817	Swivel Adjuster Rod	1
6	7107	Rod Adjustable	1
7	8418	Spacer PTO Jockey	1
8	074-0845	M8 x 45 Carriage Bolt	4
9	8310	Plate PTO Jockey Pulley	1
10	2594	Spring	1
11	9488	Jockey Pulley	6
12	7726	Belt PTO (A 84 1/2)	1
13	6400	Lever Engage	1
14	1319	3/8" UNF x 2" Bolt	2
15	6812	Bush Jockey Plate	1
16	8538	Lever PTO Engage	1
17	3683	Spacer	3
18	7285	3/8" UNF x 3 3/4" Bolt	1
19	1613	Spring	2
20	6396	Engage Rod (long)	1
21	1695	Swivel Engage Rod	2
22	9093	Transfer Link	1
23	1054	Bolt 3/8" UNF x 1 1/2"	1
24	8814	Engage Rod	1
25	4086	"R" Clip Small	8
26	2103	Clutch Spring	2
27	1694	Swivel	1
28	8515	Brake Rod	1
29	8912	Foot Pedal Rubber	1
30	8218	Foot Pedal	1
31	MX951	Grommet	1
32	RCL 812000-00	Key 3/8" Square x 2"	2
33	4152	Grommet Open Chassis	3
34	8296	Chassis	1
35	2356	Plate Brake Extension	1
36	1270	1/4" UNF Nut Nyloc	1
37	1331	Washer 1/2" Dia.	1
38	1156	Setscrew 1/2" UNF x 3/4"	1

ITEM	PART NO.	DESCRIPTION	QTY
39	1996	Circlip External 3/8" Dia.	1
40	8295	Pulley Transaxle	1
41	2831	TX Support Bkt. RH Front	1
42	3483	TX Support Bkt. Rear	2
43	9475	TX Support Bkt. LH Front	1
44	9478	Transaxle 200 Series 6 Speed	1
45	8393	Support Bkt. Grass Def. Rear	2
46	1978	3/8" UNF x 2 1/2" Bolt	4
47	3323	Galv. Support Bkts	2
48	3324	Flap Rubber (Std. Tractors)	1
49	7286	Screw M8 x 25 Tapitite	2
50	1735	2BA x 3/8" Screw	3
51	1053	2BA Nut Nyloc	3
52	9474	Support Bkt. Grass Deflector front	1
53	4949	Grass Deflector	1
54	1104	Key 3/8" x 3/4"	1
55	5735	Belt Guide	5
56	1067	Washer 4BA	4
57	3613	3/8" Washer TBL5	8
58	1688	Belt Transmission	1
59	7241	Belt Guide Plate Assembly	1
60	6796	Eng. Blk	1
61	6536	3/8" TBL5 Pulley Washer	1
62	027-11114	3/8" UNF x 4 1/2" Bolt Tufloc	1
63	1558	7" Pulley	1
64	2139	Brake Cable Retaining Pin	1
65	7542	Safety Guard	1
66	061-08	M8 Nut (Full)	2
67	3397	Spacer	1
68	7541	Post Safety Guard	1
69	4256	Belt Guide Pin	1
70	1331	1/4" Washer T3L	4
71	1156	1/2" UNF x 3/4" Set Screw	2
72	8284	Guard Plate	1
73	090-08	M8 Nut Nyloc	8
74	8236	Jockey Plate	1
75	4309	Nut M8 "J" Type	2
76	7684	Spacer	1

ITEM	PART NO.	DESCRIPTION	QTY
77	030-0825	M8 x 25 Set Screw	2
78	1422	Nut 3/8" UNF (Full)	4
79	1324	Nut 3/8" UNF Nyloc	12
80	3991	Hanger Bar	1
81	7283	Stud Hanger Bar	2
82	8262	Plate Chassis Strengthening	2
83	1633	Washer 3/8" Dia. Shakeproof	4
84	8674	Spring	1
85	4328	Spacer Hanger Bar	1
86	1602	Key 1/2" SQ x 1" Engine Block	1
87	8340	Spacer	1
88	016-1601	M16 Washer	2
89	8286	Pulley & Shaft Assembly PTO Drive	1
90	6662	Belt Guide Pin	1
91	2045	3/8" Shakeproof Washer	8
92	3229	Bearing	2
93	1982	3/8" UNF x 3/4" Set Screw	12
94	8271	PTO Mounting Plate	1
95	8337	Pulley Assembly 5"	1
96	017-0802	3/8" TBL 6 Washer	1
97	048-0820	M8 x 20 Set Bolt	1
98	MX1285	6mm SQ x 15mm long	1
99	1105	Washer 3/8" Dia. (T3L)	32
100	8341	Spacer PTO Plate	1
101	1200	3/8" UNF x 2 1/2" Bolt	1
102	8232	Plate Jockey Pulley	1
103	1969	Nut 3/8" UNF	1
104	1323	Washer 3/8" Dia. (T3L)	24
105	7418	8M x 25 Carriage Bolt	1
106	1273	3/8" UNF Nyloc Nut	16
107	2847	Washer Jockey Pulley	2
108	3463	Spring	1
109	3414	Switch Brake & Cutter Dk. Safety	2
110	6393	Bracket Safety Sw. (Short) (Cutter Deck)	1
111	6394	Bracket Safety Sw. (Long) (Brake)	1
112	8220	Shouldered Spacer (Jockey Pulley)	4
113	2592	Chain	Links as req.
114	5822	Pulley	1

THE BEST OF BRITISH ENGINEERING